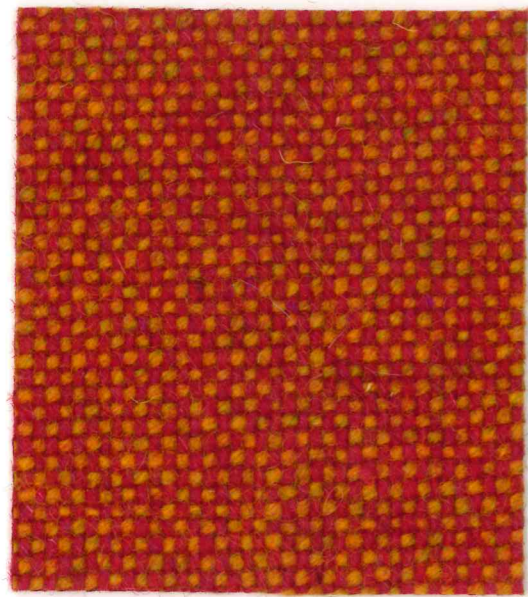


Tweed  
CF740

bute



Masala  
Item Code CF740/0215



Turmeric  
Item Code CF740/1503



Honey  
Item Code CF740/3417



Fire  
Item Code CF740/2802



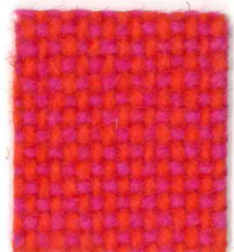
Chameleon  
Item Code CF740/0907



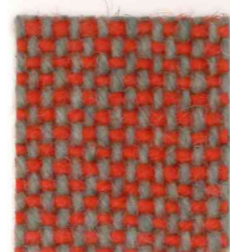
Norwegian  
Item Code CF740/0919



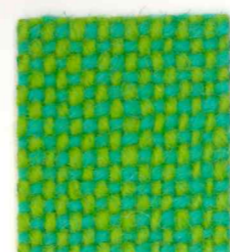
Pomegranate  
Item Code CF740/1625



Lollipop  
Item Code CF740/3840



Fiz Wiz  
Item Code CF740/1438



Pastilles  
Item Code CF740/4145



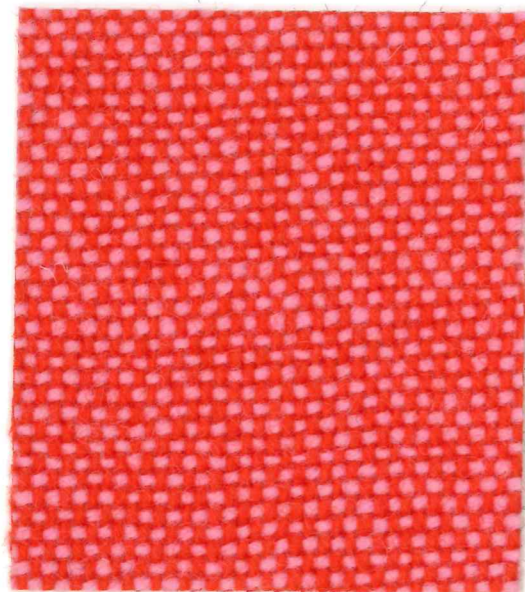
Siberian  
Item Code CF740/0908



Rhubarb  
Item Code CF740/2925



Aurora  
Item Code CF740/3129



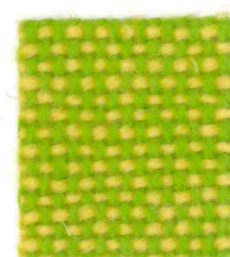
Fizzzer  
Item Code CF740/3846



Caribbean  
Item Code CF740/3108



Venus  
Item Code CF740/3103



Jazzer  
Item Code CF740/4144



Java  
Item Code CF740/3205



Neptune  
Item Code CF740/3032



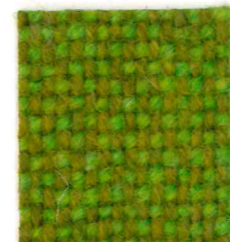
Prune  
Item Code CF740/2726



Chromium  
Item Code CF740/1416



Heron  
Item Code CF740/5111



Pear  
Item Code CF740/3304



Panther  
Item Code CF740/3501



Wolf  
Item Code CF740/3513



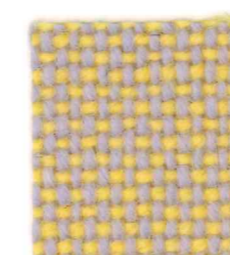
Raven  
Item Code CF740/1616



Sea Salt  
Item Code CF740/1410



Biscotti  
Item Code CF740/1112



Lemon Yellow  
Item Code CF740/4844

Tweed  
CF740

Enquiries  
sales@butefabrics.com  
butefabrics.com

bute

# Tweed CF740

bute

## Design

Tweed CF740  
by Bute Design Studio.

## Application

Woven upholstery fabric  
suitable for both heavy duty  
and domestic applications.

## Composition

100% pure new wool.

## Fabric Weight

645g/linear metre, 460g/m<sup>2</sup> approx.

## Fabric Width

140cm approx. standard usable width.

## Fabric Length

Lengths controlled and registered  
by calibrated measuring devices.

## Abrasion Resistance

Martindale, BS 2543:2004  
BS EN 14465:2003 – Annex A  
85,000 cycles.

## Flame Retardancy

Passes BS EN 1021 - 1 and 2:2006:  
Ignition Sources 0 and 1, and BS5852:  
2006: Section 4: Ignition Source 5.  
Also satisfies the requirements of  
BS7176: 2007: Medium Hazard  
category, direct testing route, when  
used in combination with a standard  
CMHR 35kg/m<sup>3</sup> polyurethane foam.  
This does not preclude passes over  
different types or densities of foam.

## Passes Crib 5

Passes IMO resolution  
A. 652 (16)

Passes Curtain and Drape  
BS5867 Part 2 Level B

## Light Fastness

Colours comply with the requirements  
of BS EN ISO 105 – B02:2013

## After Care

Regular maintenance greatly extends  
the useful life of a fabric. Ask for details  
of cleaning recommendations or consult  
a professional cleaning organisation.

## Special Requirements

Customised shades can be produced  
to meet individual requirements. Our  
Design Studio also collaborates in the  
development of special fabrics to fulfill  
aesthetic or fitness-for-purpose criteria.

## Ongoing Development

It is our policy to promote continuous  
product development and we therefore  
reserve the right to change technical  
fabrics from the Bute Collection without  
prior notice.

Bute Fabrics Ltd is an accredited BS EN ISO 9001 company.  
ISO 14001 Environmental Management System.

Wool is a natural fibre and is fully recyclable.  
Made in Scotland

## Enquiries

T +44 (0)1700 503 734  
F +44 (0)1700 504 545

sales@butefabrics.com  
butefabrics.com