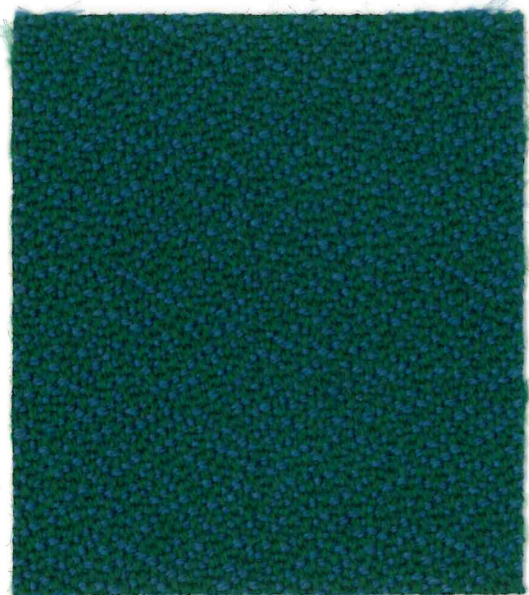


Elgin
CF667

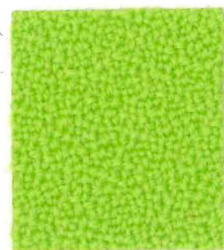
bute



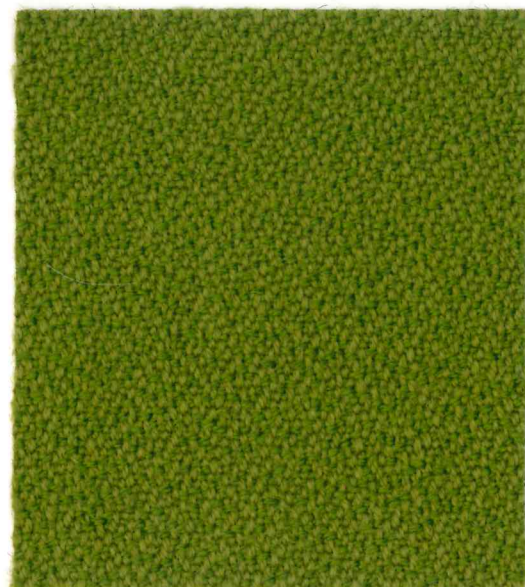
Juniper
Item Code CF667/0909



Morion
Item Code CF667/152152



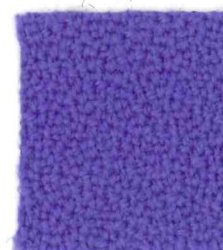
Creme De Menthe
Item Code CF667/140140



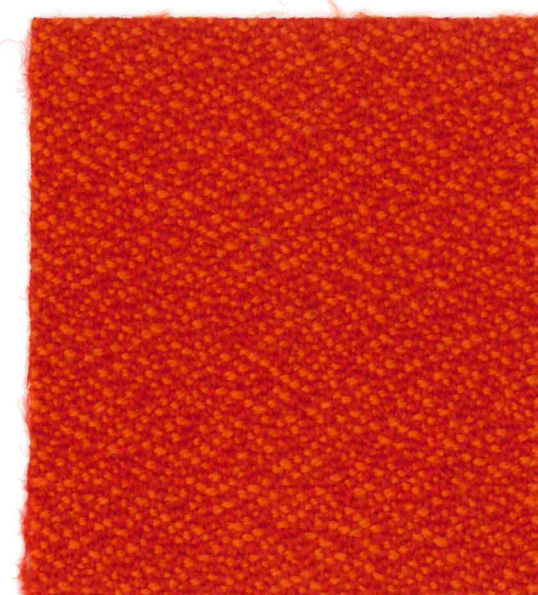
Venom
Item Code CF667/132151



Lead
Item Code CF667/1616



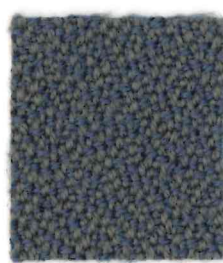
Orchid
Item Code CF667/3737



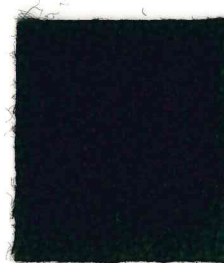
Saffron
Item Code CF667/136137



Denim
Item Code CF667/5995



Hail
Item Code CF667/8827



Jet
Item Code CF667/2525



Oxford
Item Code CF667/0808



Hush
Item Code CF667/5151



Amethyst
Item Code CF667/7575

Elgin
CF667

Enquiries
sales@butefabrics.com
butefabrics.com

bute

Elgin CF667

bute

Design

Elgin CF667
by Bute Design Studio.

Application

Woven upholstery fabric
suitable for both heavy duty
and domestic applications.

Composition

92% pure new wool, 8% nylon.

Fabric Weight

555g/linear metre, 395g/m² approx.

Fabric Width

140cm approx. standard usable width.

Fabric Length

Lengths controlled and registered
by calibrated measuring devices.

Abrasion Resistance

Martindale, BS 2543:2004
BS EN 14465:2003 – Annex A
175,000 cycles

Flame Retardancy

Passes BS EN 1021 - 1 and 2:2006:
Ignition Sources 0 and 1, and BS5852:
2006: Section 4: Ignition Source 5.
Also satisfies the requirements of
BS7176: 2007: Medium Hazard
category, direct testing route, when
used in combination with a standard
CMHR 35kg/m³ polyurethane foam.
This does not preclude passes over
different types or densities of foam.

Passes Crib 5

Passes IMO resolution
A. 652 (16)

Passes Curtain and Drape
BS5867 Part 2 Level B

Wall Panelling

BS476 part 7 and Part 6 +

Light Fastness

Colours comply with the requirements
of BS EN ISO 105 – B02:2013

After Care

Regular maintenance greatly extends
the useful life of a fabric. Ask for details
of cleaning recommendations or consult
a professional cleaning organisation.

Special Requirements

Customised shades can be produced
to meet individual requirements. Our
Design Studio also collaborates in the
development of special fabrics to fulfill
aesthetic or fitness-for-purpose criteria.

Ongoing Development

It is our policy to promote continuous
product development and we therefore
reserve the right to change technical
fabrics from the Bute Collection without
prior notice.

Bute Fabrics Ltd is an accredited BS EN ISO 9001 company.
ISO 14001 Environmental Management System.

Wool is a natural fibre and is fully recyclable.
Made in Scotland

Enquiries

T +44 (0)1700 503 734
F +44 (0)1700 504 545

sales@butefabrics.com
butefabrics.com