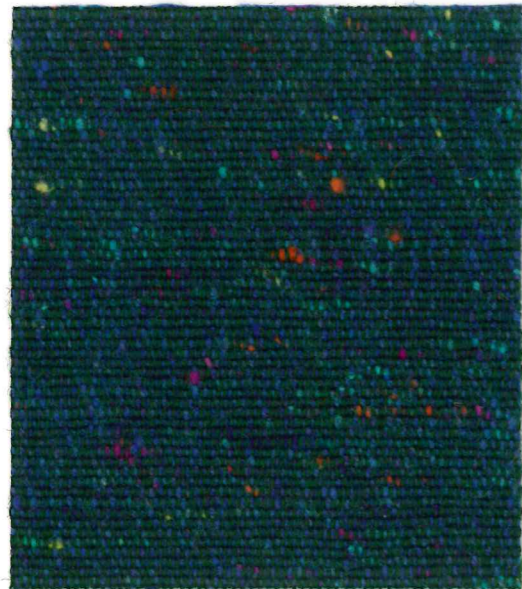


Alchemy  
CF1012

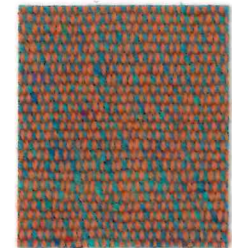
bute



WooWoo  
Item Code C1012/2214



Blue Lagoon  
Item Code CF1012/1209



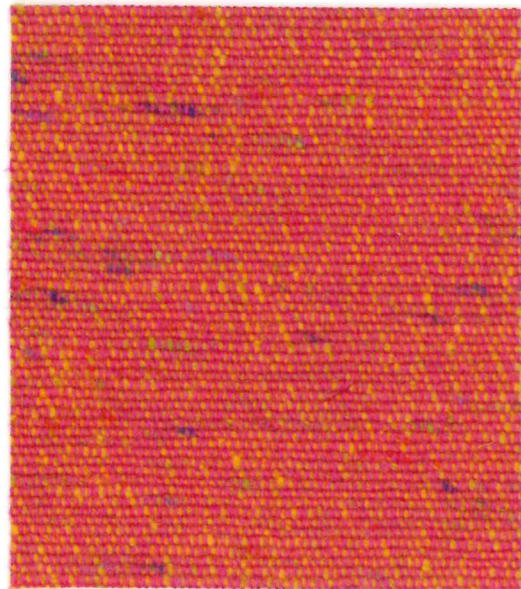
Mai Tai  
Item Code CF1012/2012



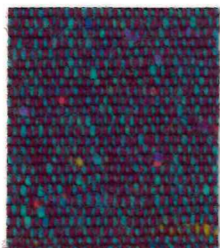
Blue Moon  
Item Code CF1012/0806



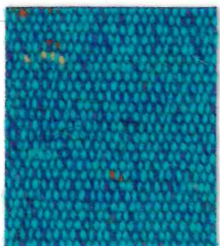
Breeze  
Item Code CF1012/0708



Daiquiri  
Item Code CF1012/2111



Purple Rain  
Item Code CF1012/1512



Hawaii  
Item Code CF1012/1109



Sazerac  
Item Code CF1012/1310



Tequila Sunrise  
Item Code CF1012/1411



Gin Fizz  
Item Code CF1012/0604



Kir Royale  
Item Code CF1012/1513



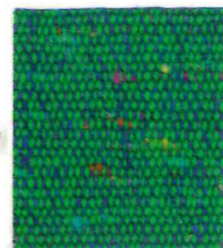
Manhattan  
Item Code CF1012/1609



Cosmopolitan  
Item Code CF1012/2515



Bloody Mary  
Item Code CF1012/2415



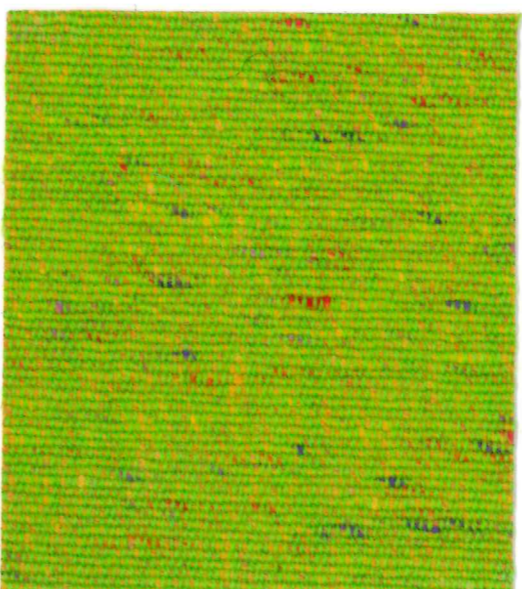
Mojito  
Item Code CF1012/1809



Sour  
Item Code CF1012/1012



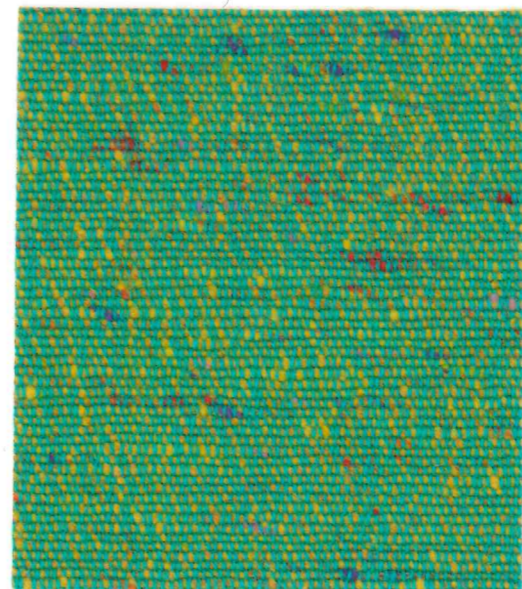
Paloma  
Item Code CF1012/2616



Appletini  
Item Code CF1012/2311



Sweet Talker  
Item Code CF1012/1908



Margarita  
Item Code CF1012/1111



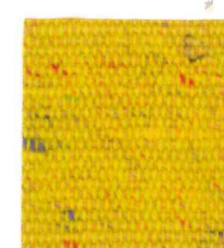
Highball  
Item Code CF1012/0205



Long Island  
Item Code CF1012/0503



Moscow Mule  
Item Code CF1012/0302



Mimosa  
Item Code CF1012/1711



Espresso Martini  
Item Code CF1012/0403



Bronx  
Item Code CF1012/1004



Silver Sunset  
Item Code CF1012/0705



Negroni  
Item Code CF1012/0202



Black Velvet  
Item Code CF1012/0101

Alchemy  
CF1012

Enquiries  
sales@butefabrics.com  
butefabrics.com

bute

# Alchemy CF1012

bute

## Design

Alchemy CF1012  
by Bute Design Studio.

## Application

Woven upholstery fabric  
suitable for both heavy duty  
and domestic applications.

## Composition

61% merino, 33% pure new wool,  
6% nylon.

## Fabric Weight

448g/linear metre, 348g/m<sup>2</sup> approx.

## Fabric Width

140cm approx. standard usable width.

## Fabric Length

Lengths controlled and registered  
by calibrated measuring devices.

## Abrasion Resistance

Martindale, BS 2543:2004  
BS EN 14465:2003 – Annex A  
80,000 cycles.

## Flame Retardancy

Passes BS EN 1021 - 1 and 2:2006:  
Ignition Sources 0 and 1, and BS5852:  
2006: Section 4: Ignition Source 5.  
Also satisfies the requirements of  
BS7176: 2007: Medium Hazard  
category, direct testing route, when  
used in combination with a standard  
CMHR 35kg/m<sup>3</sup> polyurethane foam.  
This does not preclude passes over  
different types or densities of foam.

## Passes Crib 5

Passes IMO resolution  
A. 652 (16)

Passes Curtain and Drape  
BS5867 Part 2 Level B

## Light Fastness

Colours comply with the requirements  
of BS EN ISO 105 – B02:2013

## After Care

Regular maintenance greatly extends  
the useful life of a fabric. Ask for details  
of cleaning recommendations or consult  
a professional cleaning organisation.

## Special Requirements

Customised shades can be produced  
to meet individual requirements. Our  
Design Studio also collaborates in the  
development of special fabrics to fulfill  
aesthetic or fitness-for-purpose criteria.

## Ongoing Development

It is our policy to promote continuous  
product development and we therefore  
reserve the right to change technical  
fabrics from the Bute Collection without  
prior notice.

Bute Fabrics Ltd is an accredited BS EN ISO 9001:2008  
company. ISO 14001 Environmental Management System.

Wool is a natural fibre and is fully recyclable.  
Made in Scotland

## Enquiries

T +44 (0)1700 503 734  
F +44 (0)1700 504 545

sales@butefabrics.com  
butefabrics.com